

BOURDON TUBE SYSTEM

MODEL #32 SERIES LIQUID FILLED GAUGE

GAUGE WITH HEIGHT BAYONET RING

TECHNICAL FEATURES

Nominal Size

- LM: DN50, DN63, DN100 and DN160
- CBM: DN50, DN63, DN100 and DN160
- LBM: DN100 and DN160

Housing

- thickness: 0.6~0.9mm
- standard: polished AISI 304 stainless steel
- option: AISI316 stainless steel(model #32S)

Ring

- polished AISI 304 stainless steel, height bayonet type
- option: AISI316 stainless steel(model #32S)

Window

- standard: tempered glass
- option: see ordering information

Dial

- aluminum material, with stop pin
- custom dial layout

Pointer

- aluminum material, black finished, adjustable

Oil Cap

- blow out plug

Filling Liquid

- standard: glycerin
- option: no liquid filled or silicone

Connector(according to EN837-1)

- AISI 304 stainless steel
- with screw-in restrictor
- size and thread check ordering information
- custom designs are available
- option: AISI316 stainless steel(model #32S)

Welding

- argon arc welding

Accessories

- front flange for all size
- back flange for all size

Pressure Element

- AISI 316 stainless steel
- 30"Hg(vacuum) to 1000psi in C-form
- range > 1500psi in helical

Movement

- standard: polished AISI 304 stainless steel
- option: AISI316 stainless steel(model #32S)

Pressure Range(according to EN837-1)

- vacuum through 15000psi(1000bar)
- compound range available

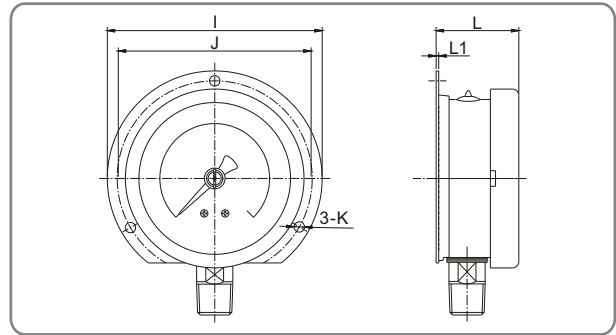
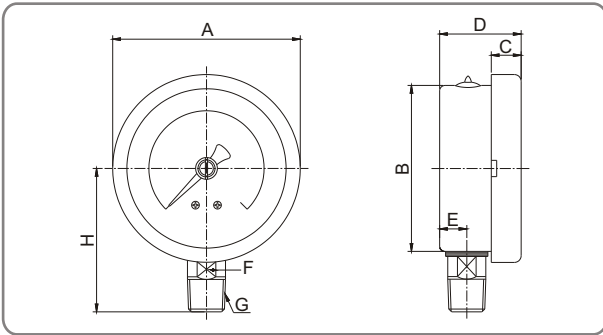
Accuracy

- +/-1.6% of full scale for DN50 and DN63
- +/-1.0% of full scale for DN100 and DN160

Over-pressure

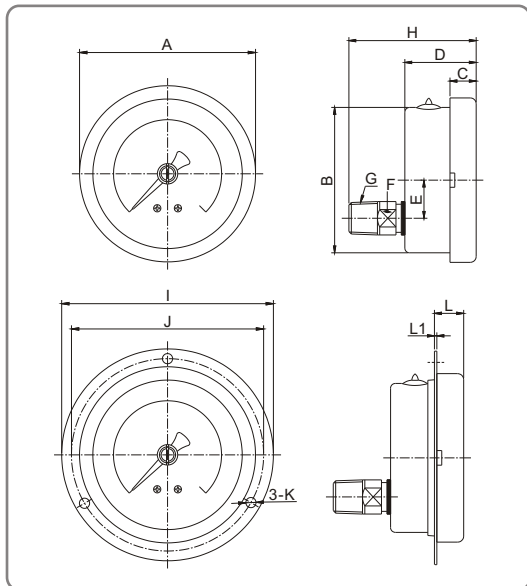
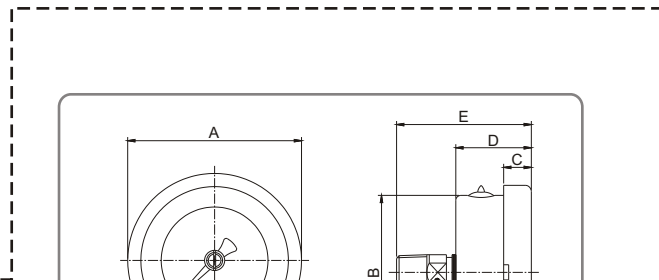
- 130% of full scale





Dimension data

DN	A	B	C	D	E	F	G	H	I	J	K	L	L1
63	69	61	11	30	10	14	1/4	55	87.5	74	3.5	31.5	0.8
100	110.5	99.5	16	48	15	22	1/2	86.5	131.5	118	5	50	0.8
160	160	150	17.5	49.5	16	22	1/2	114	194	176	5.5	53	1



Dimension data

DN	A	B	C	D	E	F	G	H	I	J	K	L	L1
63	69	61	11	30	14	1/4	58	87.5	78.5	3.5	11.8	0.8	

Dimension data

DN	A	B	C	D	E	F	G	H	I	J	K	L	L1
100	100.5	98	16.5	48	34	22	1/2	80	132	117	4.5	7.5	1.5
160	161	158	18	50.5	34	22	1/2	82.5	194	178	6	7.5	1.5